



User Manual



2 Person Assembly

Contact Us:

www.SleepSophie.com.au

1300 975 337

Welcome

Congratulations on the purchase of your new lift recliner chair.

The Sophie Embrace t was designed to be the ultimate chair for those who spend long period of time sitting and sleeping in a recliner.

Provided your chair is maintained and operated in accordance with this manual, it should last for many years and will assist you with comfort when sitting or rising to stand.

The positioning of the recliner chair is important. The moving parts must not be obstructed by walls or other objects. The optimum distance from walls or furniture is set out in this manual, however should you require any assistance, please contact the customer service department of Sleep Sophie.

Please read this manual thoroughly before using your chair. If you have any doubts about warnings or instructions, or do not understand the controls, contact our Customer Services Department via the contact details above for a full explanation.

If you think your chair may be damaged, do not use it and contact Sleep Sophie for advice.

We suggest that you keep this manual in a safe place. It contains essential information regarding the operation of your chair.

This chair is manufactured on behalf of Sleep Sophie.

Contents

4 - EMI STATEMENT

4 - OPTIONAL 9V BATTERY BACKUP

5 - ASSEMBLY INSTRUCTIONS

6 - REMOTE CONTROL DIAGRAM

7 - FEATURES OVERVIEW

8 - POSITIONING YOUR CHAIR

8 - GETTING STARTED

9 - SAFE SEATING POSITION

10 - HAZARD AREAS

10 - UPHOLSTERY CARE

11 - TROUBLESHOOTING

12 - ENGINEER'S CHECKLIST

13 - TECHNICAL SPECIFICATION

13 - DISPOSAL & RECYCLING

13 - 12 MONTH GUARANTEE

EMI STATEMENT

Lift and rise chairs can be effected by electromagnetic interference coming from electrical sources such as mobile phone, radios, and Wi-Fi, that may on rare occasions cause unexpected movement or damage to electrically-powered devices.

It is therefore recommended that at least 10 feet be maintained between the lift and rise chair and any handheld equipment emitting more than 10 watts of output power. Refer to the manufacturer's literature for the hand-held device to determine the maximum output power of that device. Every electrically-powered device has a resistance to EMI. The higher the resistance level, the greater the protection against EMI.

Per EMC standards, this product is classified as a Group 1, Class B product, meaning the chair uses RF energy only for its internal function. Therefore, its RF emissions are very low and are not likely to cause any interference in nearby electronic equipment making the lift chair suitable for use in all establishments, including domestic establishments and hospitals.

Be aware that mobile phones, two-way radios, laptops and other types of radio transmitters may cause unintended movement of your electrically-powered device due to EMI. Exercise caution when using any of these items while operating your lift chair.

Do not modify your lift chair in any way. Your lift chair itself can disturb the performance of other electrical devices located nearby, such as alarm systems.

If unintended motion occurs, discontinue use of the lift chair. Contact Sleep Sophie.

OPTIONAL 9V BATTERY BACKUP

(If purchased as an optional accessory) The battery backup system requires two 9v square batteries (not included). In the event of a power failure, the backup system is designed to perform a single movement to assist with returning the chair to a sitting position, or raising someone out of the chair.

Please note that the battery backup does not recharge itself. Fresh batteries are required every time the battery backup system is activated during a power failure, or once a year if the battery backup system has not been activated.

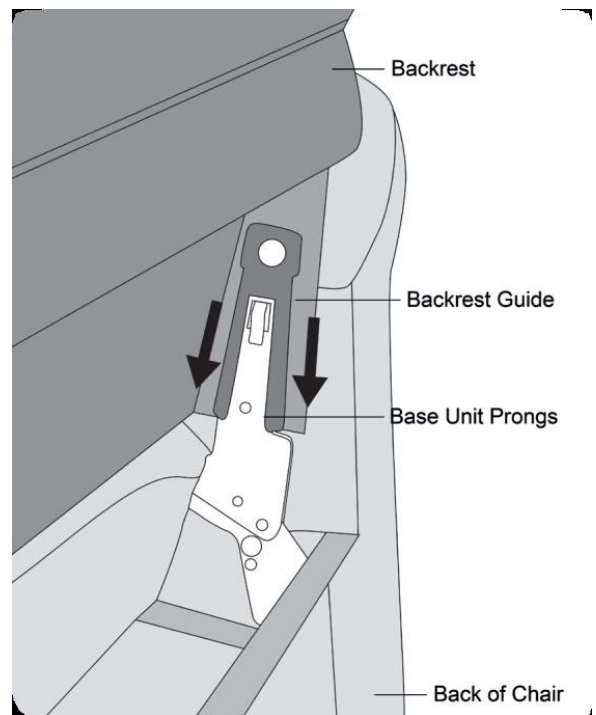
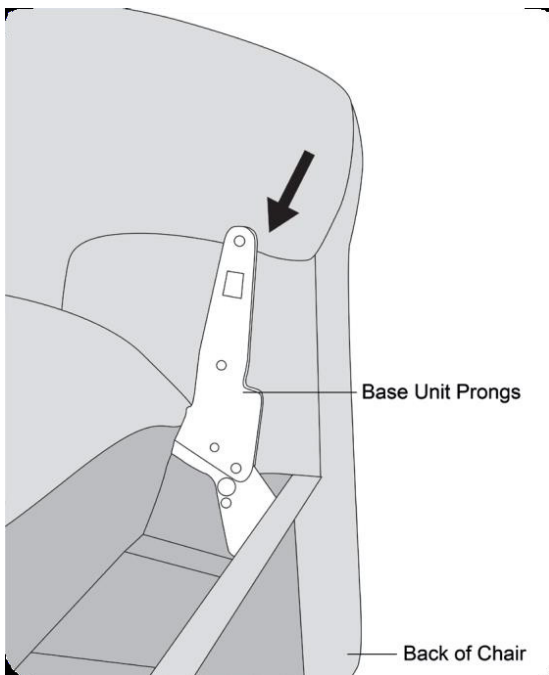
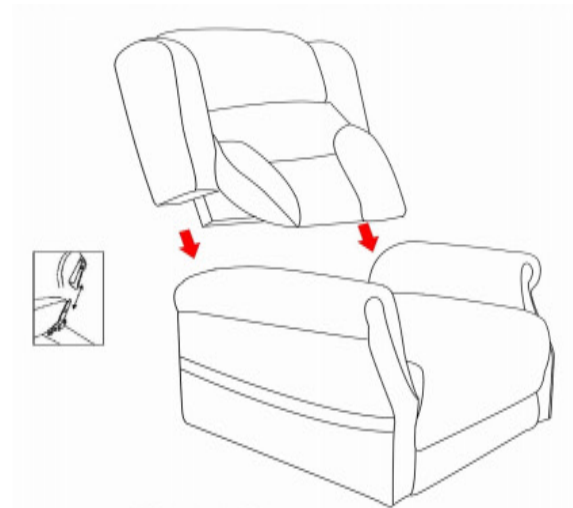
IMPORTANT - If you turn your chair's power supply off at the wall plug for any extended period of time (longer than 1 hour), the chair will draw residual current from the 9V batteries, resulting in a depleted battery when you might need to use them in an emergency. For this reason, be sure to replace the batteries regularly when turning off the power, and at least once per year.

Please note that the amount of lift you will get from the backup will depend on user weight and battery condition.

Assembly Instructions - Backrest

Carefully unpack the backrest and base.

Once you have freed the handset and power cables from their transport position (Normally cable-tied to the frame), you can connect the backrest to the base. There are metal runners that the backrest slides into. You should here a click as the release pin locks into position as you connect the backrest.

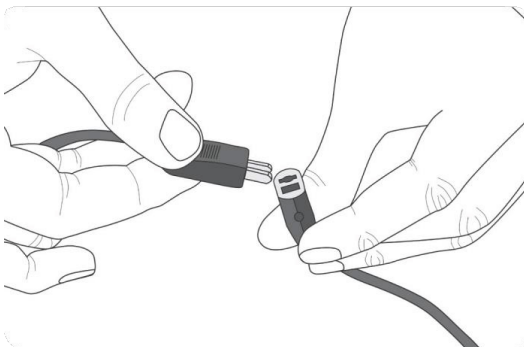


Assembly Instructions - Cables

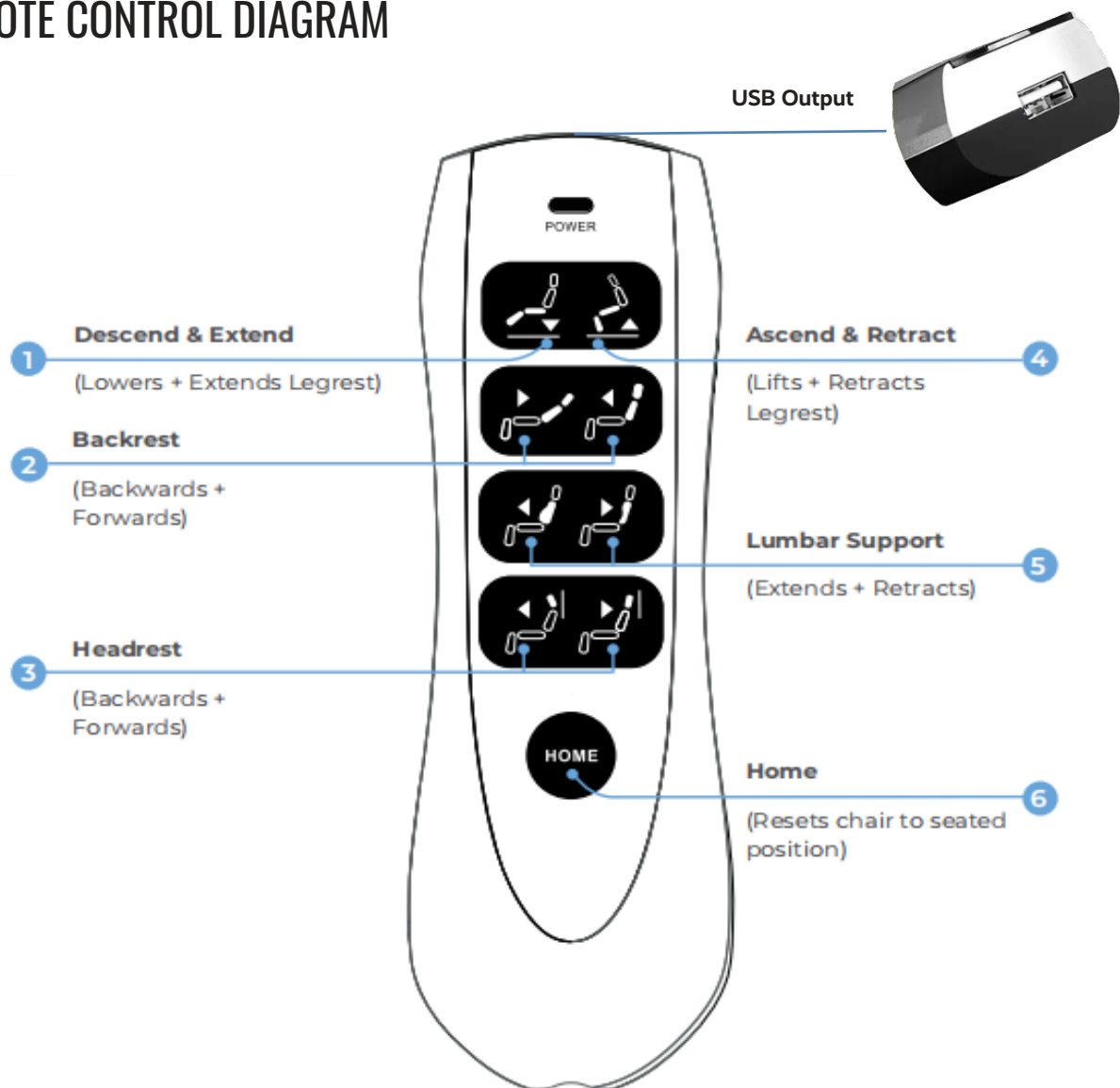
Once the backrest is fitted, connect the handset male and female plugs together.

You will also need to connect the cables for the lumbar and headrest motors protruding from the bottom of the backrest into the control unit into the base of the chair. The male and female sides of these cables are coded to ensure they are not mixed.

Finally, plug the power adapter into a mains socket.



REMOTE CONTROL DIAGRAM



1 Descend & Extend Descend (Stand-to-Sit): If situated in lift position, the chair will lower before extending the legrest. Extend: Extends legrest to maximise comfort and relaxation.	4 Ascend & Retract Ascend (Lift-to-Stand): Raises and tilts the chair forwards to assist users with standing. Retract: Retracts legrest to achieve a comfortable seated position.
2 Backrest Backrest: Adjusts the backrest to provide postural support whatever the activity.	5 Lumbar Support Lumbar Support: Adjusts the inbuilt lumbar cushion to provide tailored lower back support.
3 Headrest Headrest: Adjusts the headrest to help alleviate neck muscle strain, providing optimal support while reading or watching TV.	6 Home Home: Resets the chair to the seated position.

Warning! Never press two buttons together as this will damage your chair

Warning! Do not expose the handset to heat. This may cause the rubber to breakdown

HEAT & MESSAGE CONTROL DIAGRAM



1. Power to Controller – ON/OFF

4. Heating Function – ON/OFF

2. Massage Intensity – High/Med/Low

5. Massage Mode Selection – 5 Modes

3. Set Working Time – 10/20/30 mins

6. Massage Selector – Seat/Lumber/Both

Warning! Never press two buttons together as this will damage your chair.

Warning! Massage & Heat function should only be used for a maximum of 25 minutes at a time with a minimum of 15 minutes resting period in between.

Warning! Never leave the chair unattended with the heat or massage on.

FULL FEATURES BREAKDOWN

No expense was spared in the creation of the ultra comfort, and we can confidently say it's the most comfortable chair available:

Memory foam cushioning

Used throughout the chair adds extra pressure relief and comfort

Extending footrest

Allows those with longer legs to stretch out without overhanging heels

Heat & Massage system

Relieves aches and pains throughout the whole body

USB Output

For charging you phone and other mobile devices

POSITIONING YOUR CHAIR

If you wish to move the chair for cleaning or for a more comfortable position, please follow the instructions below. Remember to position a telephone within reach so you can call for help in an emergency.

- Make sure there is enough space behind the headrest for it to fully recline.
- If the backrest hits an object such as a wall it will damage the mechanism.
- Beware of trip hazard when positioning the power lead. A lead protector should be used where it is exposed.
- Level the chair by adjusting the feet.
- If the pile of the carpet is thick ensure that the footrest does not catch on the carpet. If it does, raise the chair by using the foot adjusters.

Before using your chair ensure that the cable appears undamaged, and it does not pose a trip hazard.

Ensure all cables are clear of the mechanism and that the chair isn't situated on top of any cables prior to use.

GETTING SEATED

Before you operate the controls, ensure that children and pets will not be trapped, and that the chair is not obstructed in any way.

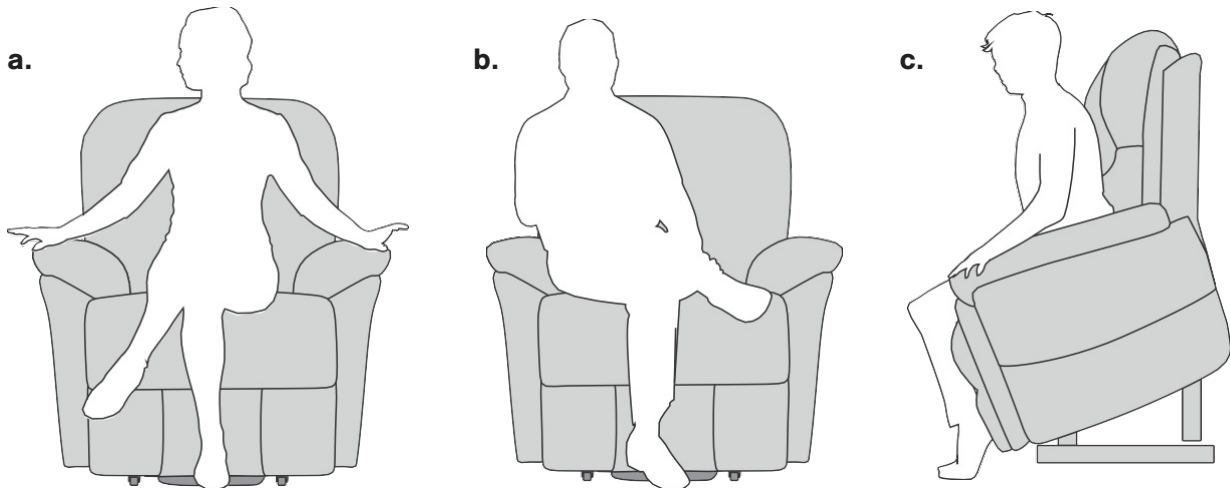
- Stand close to the chair – press the UP/RISE button on the remote control and raise the chair to a comfortable height.
- Position yourself in the center of the chair, ensure you are stable then reach back until you feel both armrests. Then lower yourself into the seat.
- Once you are supported by the chair, press the DOWN/LOWER button, and lower yourself to a sitting position. When the chair has stopped moving release the button.

Warning! Always ensure that the castors (if fitted) are in the correct position before getting in or out of the chair.

Warning! When the chair is in the raised position, do not drop heavily onto it but lower yourself gently. A severe impact could damage the mechanism.

SAFE SEATING POSITION

The chair is a lifting device, and it is important that you are positioned correctly in the chair when rising and lowering. If the correct body position is not maintained there is a risk of injury or damage to the chair. The central position should be used either in the standing or sitting mode.



- a) Correct position: Sit centrally with arms on the chair.
- b) Incorrect position: This will place excessive strain on the mechanism plus the body is unstable.
- c) Using the chair to stand.
 - Press the UP/RISE button and the chair will raise. Remember to keep it in the central position in the chair.
 - When you have reached a position which is easy for you to stand or get out of the chair, release the button.
 - Press the DOWN/LOWER position to lower the chair back to its conventional position.
 - Store the control in the pouch provided.

If you are not using the chair, it should not be left in the UP or RECLINED position. When the chair is in the sitting position it can of course be used as a normal piece of furniture.

Warning! Before operating the controls ensure that children and pets will not be trapped and that the chair is not obstructed in any way. Do not attempt to get out of the chair with the footrest in the raised position – the mechanism may be damaged by putting too great a weight on it.

HAZARD AREAS

Warning! When the chair and footrest are raised, keep the indicated areas clear of pets, children, bags, or any obstruction (see images above). Always ensure that cables or tubes are not trapped in any part of the moving mechanism. When positioning supporting medical devices, make sure they cannot be damaged by the movement of the chair, or displaced in such a way to result in damage to cables or tubes.

UPHOLSTERY CARE & MAINTENANCE

Caring for Leather & Bonded Leather Upholstery

Do not overexpose leather or bonded leather to sunlight.

Leather and bonded leather furniture must be thoroughly cleaned to keep free of dust and dirt. Please dust frequently and occasionally wipe it over with a damp, soft cloth. Let the furniture dry thoroughly before use.

Never use colored cloth to clean leather or bonded leather. Color may transfer from the cloth to the furniture.

Never use any type of harsh cleaner – especially alcohol-based products.

Spots & Spills

Blot excess liquid immediately with a clean absorbent cloth or sponge. If necessary, use clear, lukewarm water and gently wipe the spill. Dry with a clean cloth and allow to air dry. Do not dry wet areas with hair dryers etc.

Stubborn Spots & Stains

For most leather or bonded leather furniture, use a mild solution, such as Neutrogena or Ivory liquid soap, with lukewarm water on a soft cloth. Always clean a small hidden sample area first and clean gently (no firm pressure). After cleaning, rinse and dry naturally. For natural leather, blot excess liquid immediately with a clean absorbent cloth. Stains should disappear eventually.

Do Not Use

Saddle soaps, oils, abrasive cleaners, soaps, furniture polish, oils, varnish or ammonia water should not be used on leather or bonded leather. The leather has already been permanently preserved in the tanning process and needs no maintenance other than the simple cleaning recommended.

Note: Please be aware that certain household chemicals and personal care products can have an adverse effect on the leather and fabrics. This includes the products listed above and hair preparations, some skincare preparations, room sprays etc., plus some strong medications.

Cleaning Fabric Upholstery

In all cases remove excess spillage immediately using a clean white absorbent cloth or paper roll. Blot the stained area so that the fabric is as dry as possible. If the fabric is stained, use a damp cloth moistened with a diluted disinfectant cleaning agent. Clean a small hidden sample area first.

Warning! Always disconnect the chair from the mains before cleaning it, and do not reconnect it until you are sure it is completely dry. Never allow water to get into the electrics.

Maintenance: The chair is designed to be virtually maintenance-free, but we do advise that it is checked once every 24 months. Contact Sleep Sophie to arrange a service if you feel its necessary. On no account should an unqualified person attempt any repairs or maintenance.

GENERAL TROUBLE-SHOOTING GUIDE

• **Chair will not lift**

1. Check the chair is plugged into an electrical outlet and that the outlet is switched on.
2. Check the cable is not damaged. Check the fuse in the plug. Check the house fuse is in order. If fuses blow after being replaced, do not use the chair but unplug it and contact Sleep Sophie.
3. Continuous use of the chair mechanism over a brief period can overheat the motor. This

will trip the safety switch and the chair will not work. Wait for 10 to 15 minutes and the switch will reset. The chair will now operate again. If it fails to operate contact 1300 975 337 Customer Services.

• **Noises**

All motors hum and vibrate slightly, this is normal. There are many moving parts, and you may hear noises when operating the chair. However, if the noise is excessive, contact Sleep Sophie.

• **Motor hums but will not lift**

Contact Sleep Sophie as there could be a mechanical failure.

• **Motor keeps running and will not shut off**

Turn off the power and contact Sleep Sophie.

• **Hot smells or smoke**

Disconnect the chair by unplugging at the mains, take fire safety precautions and contact Sleep Sophie.

Warning! If you are uncertain about your chair and the way it is working, unplug it and contact Sleep Sophie.

ENGINEER'S CHECKLIST

Warning! Always disconnect the chair from the mains before disassembling to avoid an electrocution hazard.

Warning! Springs can cause injury. Be aware that the exposed parts of the mechanism may move quickly and trap fingers or limbs.

- Inspect all wiring and connections in the transformer/mains unit and remote control.
- Check mechanism is working correctly and is level when raising/lowering.
- Ensure the chair is on level ground and the feet are adjusted correctly.
- Check the footrest does not touch the carpet or rug as it retracts.
- Check there are no signs of spillage on the chair – if contamination is suspected inspect the electrical system below the seat.
- Check whether the seat cushion is worn on one side – this indicates the incorrect positioning of the person when raising/lowering.
- Check the motor is quiet.
- Check the runners are lubricated and running true.
- If there is stickiness of the mechanism when operating this could indicate damaged bearings.
- Ensure nothing has been left down the sides of the armrests which may cause the chair to jam.
- Check that there are no obstructions under the chair. Check the functioning of the Hazard Sensor system (if fitted).
- If the backrest is marked this indicates that the chair has been in contact with a wall or obstruction.
- If the chair is fitted with the heating and massage option, check the safety of the electrical system before checking for correct functioning. Check for any cable damage and signs of over-heating and replace parts as necessary.
- Check all functions of the remote-control work correctly, including the battery back up. Replace the back-up batteries with those meeting the specification.

Before signing off the maintenance check, correct all deficiencies, replacing covers and parts as necessary.

TECHNICAL SPECIFICATION

Weight limits and specifications for our riser recliner range are shown below. Do not exceed these limits either by the weight of the person or by having pets, children or other items on your lap when operating the chair.

SIZE(CM)	Sophie Embrace
Total Width	90
Total Length	98
Total Height	105
Backrest Height	76
Inner Seating Width	57
Inner Seating Depth	56
Seating Height	51
Armrest Height	68
Total Depth when Footrest Opening	103

DISPOSAL & RECYCLING

When you dispose of your chair, contact your local waste disposal agency for advice. The chair must be disposed of in accordance with the local and national statutory regulations.

24 MONTH GUARANTEE INFORMATION

Sleep Sophie (the 'Company') guarantees its products against defects in materials and workmanship under normal use for a period of two year from the date of purchase by the original retail purchaser (the 'Guarantee Period'). If a defect arises and a valid claim is received with the Guarantee Period, at its discretion, the Company may: -

- 1 Repair the defect at no charge, using new or replacement parts; functionally equivalent to, the original product; or
- 2 Replace the defective part with a new part or a part that is either the same as, or functionally equivalent to, the original part.
- 3 Replace the product with a new product which is the same as, or at least functionally equivalent to, the original product; or
- 4 Refund the purchase price of the product.

A replacement product or part assumes there is time remaining on the Guarantee Period of the original product or the new claim is no longer than 30 days from the date of the previous replacement or repair, whichever provides longer coverage.

When a product or part is exchanged, any replacement item becomes the property of the consumer, and the replaced item becomes the Company's property. When a refund is given, the product for which the refund is provided must be returned to the company and becomes the company's property.

Exclusions & Limitations

The Guarantee does not apply to the following:

- 1 Damage caused by accident, abuse, misuse, flood, fire, earthquake or other external cause.
- 2 Damage caused by operating the product outside the permitted or normal use of the product.
- 3 Damage caused to products that were not operated, maintained, or serviced in accordance with the Owner's Manual.
- 4 To a product or part that has been modified or repaired otherwise than in accordance with the Owner's Manual or with the express written authority of the Company; or
- 5 To normal wear or tear, normal maintenance, service, or periodic adjustments necessitated by normal use.

In addition to the above, the Company shall be under no liability in respect of any defect arising from willful damage, negligence, or misuse. The Guarantee only applies to the original purchaser and is non-transferable.

Except in respect of death or personal injury caused by the Company's negligence, the Company shall not be liable by reason of any representation (unless fraudulent), or any implied warranty, condition or other term, or any duty at common law or under the terms of the Guarantees, for any indirect, special or consequential loss or damage (whether for loss of profit or otherwise), costs, expenses or other claims for compensation whatsoever (whether caused by the negligence of the Company or its employees or otherwise) which arise out of or in connection with the supply of the product(s) or their use or resale, and the entire liability of the Company under or in connection with the products and the Guarantees, shall not exceed the price paid for the products.

Any descriptions, specifications, samples, models, bulletins, or similar materials used in connection with the sale of products by the Company are only for information and should not be construed as warranties.

The consumer's statutory rights are not affected by the Guarantee.