

Mattress Characteristics

Specification: T04

Mattress dimension : 80"x 42" x8" (LxWxH)
Materials: Nylon TPU air cells, PU fireproof cover
Air cell: 18 cells, cell on cell
Max. user weight : 200 KG

Compressor (pump) Characteristics

Specification

Item: P08A
Power Supply: 220V/50Hz
Air Output: 7 liter/min.
Pressure Range: 30 mmHg - 80 mmHg
Cycle Time: 12 min.
Alternating mode; AB alternating, static function
Size: 27cm(L) x 13cm(W) x 9cm(H)
Weight: 1.29kgs

Importer:

Sleep Sophie

EC REP

SUNGO Europe B.V.
Add: Fascinatio Boulevard 522, Unit 1.7, 2909VA Capelle
aan den IJssel, The Netherlands
Tel: +31(0)10 3034500; +31(0)2021 11106

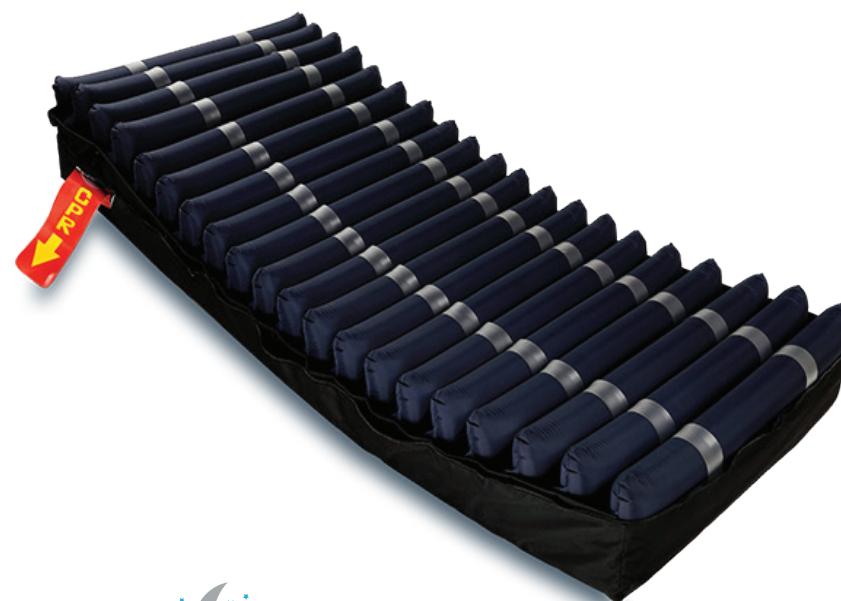
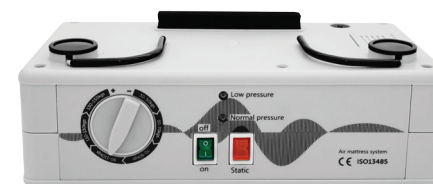


MADE IN CHINA

USER'S MANUAL

MEDICAL ANTI-DECUBITUS SYSTEM (Mattress with Adjustable Pump)

Pump: P08A



Sophie

Operating Principles

- Alternating pressure at a sufficient rhythm avoids prolonged vascular compression which is likely to cause tissue hypoxia.
- Alternating pressure adapts the mattress to the patient's position.

Guidelines For Use

- The traditionally accepted method of pressure sore control is to turn the patient at regular intervals and to observe the areas of risk regularly.
- Alternating pressure mattress is intended to compliment this treatment, observation of the patient and turning when necessary should still be considered as part of the treatment.

General

- For patients who are likely to spend more than 15 hours per day in bed.
- For patients who are classed as medium to high risk of developing pressure ulcers.

Installation / Use

1. Unroll the mattress.
2. Position it on the bed.
3. Secure it to the bed with the fixing straps.
4. Hang the compressor (pump) at the end of the bed (foot end) using the hooks.
5. Connect the mattress feed pipes to the compressor (pump) connector by matching the appropriate outlets.
6. Connect the electrical power cable to the compressor (pump).
7. Guide it along the bed to the mattress plug socket and plug in.
8. Press switch to turn on the compressor (pump).
9. Before positioning the patient onto the mattress, wait until the mattress has been fully inflated.
10. Select the pressure corresponding to the patient's morphology.

Safety Measures

- DO TAKE CARE when operating this electrical equipment.
- DO NOT leave it connected to electrical supply when not in use.
- DO NOT expose the equipment to excessive humidity.
- DO NOT use corrosive cleaning chemicals such as industrial degreasers or acetic solvents.
- DO NOT attempt to relocate this equipment whilst connected to the electrical supply.

Cleaning / Disinfection

Compressor (Pump):

- DO TAKE CARE to disconnect it from the electrical supply before cleaning.
- DO TAKE CARE to use a cloth impregnated with a mild detergent solution.
- DO TAKE CARE to follow manufacturer's solution concentrations.
- DO TAKE CARE not to exceed manufacturer's recommendations before wiping off cleaning solution.

Use a cloth impregnated with a detergent solution or a surface detergent / disinfectant with CE mark following the usage concentrations recommended by the manufacturer and follow the endurance times.

Maintenance

Compressor (pump) maintenance operations must be strictly carried out by a technician authorized and trained by the importer.